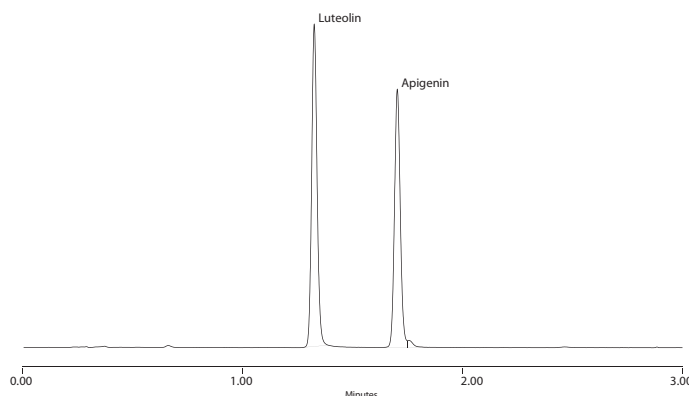


UHPLC Analytical Standards Kits with COSMOSIL Cholester Column

Analytical Standard kits available:

- Chamomile flavonoids (AS101)
- Aristolochic acids (AS102)
- Skullcap standards (AS103)
- Camptothecins (AS104)
- Buckthorn/Rhubarb (AS105)
- Magnolia (AS106)
- Caffeic Acid Esters (AS107)
- Kudzu flavonoids (AS108)
- Soy isoflavones (AS109)
- Red Clover standards (AS110)
- Berry flavonoids (AS111)
- Grape Skin standards (AS112)
- Evodia standards (AS113)
- Citrus Flavonoids (AS114)
- Celery Standards (AS115)



Chamomile flavonoids: 1 Luteolin, 2. Apigenin

What comes with each kit:

- Set of standards
- UHPLC Method
- 1 COSMOSIL Cholester Column
- Certificate of Analysis for each standard

Benefits of UHPLC Standards Kits:

- Convenience
- Saves time in developing methods
- Step by step instructions
- Keep analytics in house
- Increased confidence in results

About the Cholester Column:

The COSMOSIL Cholester is a useful column for the analysis of dietary supplements and natural products. It can often be used as a direct replacement for traditional C18 stationary phases, exhibiting the same hydrophobicity as C18 for many compounds. In addition, the COSMOSIL Cholester column can provide improved selectivity for closely related compounds compared with C18 stationary phases, particularly with geometrical or positional isomers.

Column dimensions: 2.0 mm ID x 50 mm
Particle size: 2.5 μ



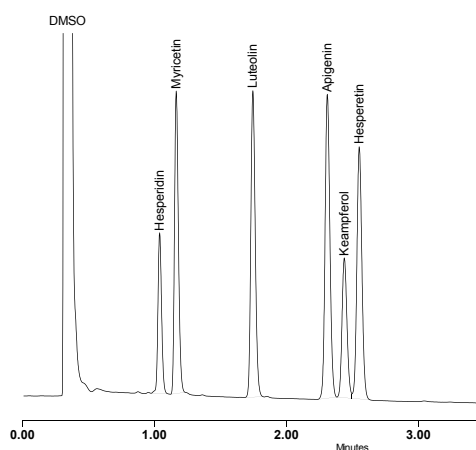
Specialty Chemicals for Life Science Research

LKT Laboratories, Inc. • lktlabs.com • Phone: 651-644-8424 or 888-LKT-LABS • Fax: 651-644-8357

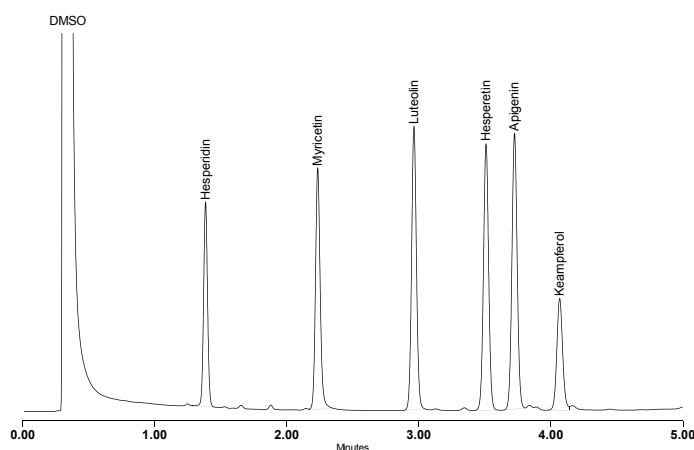
UHPLC Analytical Standards Kits with COSMOSIL Cholester Column

Each of our kits comes with a Cholester column, which can separate certain compounds better than a traditional C18 column. The Cholester column can provide improved selectivity for closely related compounds, particularly those with geometrical or positional isomers.

BEH C18 Column using
our Berry extract kit (AS111)



Cholester Column using
our Berry extract kit (AS111)



Additionally, the conditions for UHPLC are more desirable than a traditional HPLC, using less solvent, pressure, smaller samples and saving valuable time.

Column Comparison:

	Traditional C18	Cholester	Waters BEH C18
Dimensions	4.6 x 250mm	2.0 x 50mm	2.1 x 50mm
Particle Size	5µm	2.5µm	1.7µm
Flow rate	0.8-1.5ml/min	0.4ml/min	0.2-0.6ml/min
Back Pressure	1000-5000 psi	2000 psi	4000-10000 psi
Run Time	20-30 min	<10 min	2-6 min
Injection volume	10-50 µL	0.5 µL	0.5 µL

